

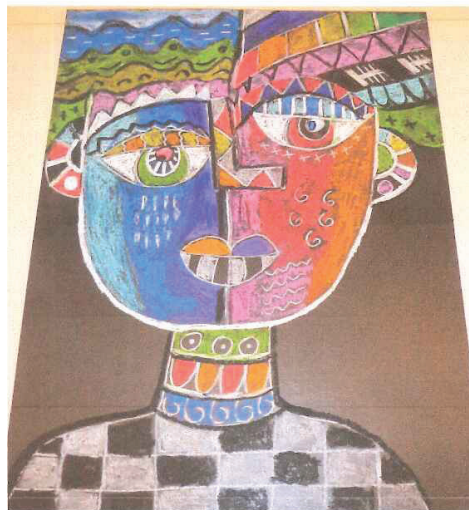
## Picassoesque Face

This project is inspired by Pablo Ruiz y Picasso, (1881- 1973) Picasso born in Màlaga, Spain and is widely acknowledged to be one of the most influential artists of the 20th century. A highly prolific artist, Picasso experimented with a wide range of styles, themes and mediums throughout his career. Among Picasso's many contributions to the history of art, his most important include pioneering the modern art movement called Cubism, inventing collage as an artistic technique, and developing assemblage in sculpture.

**Materials:** Black poster board, white china marker, oil pastels, chalk pastels, spray fixative

### What to do:

1. Use the white China Marker and draw a U for the chin and sides of face.
2. Draw a neck and shoulders.
3. Draw an enclosed L-shaped nose and attach a high arched eyebrow to the left side.
4. Draw open almond shapes for eyes, (make one eye higher than the other if you like) and a line for each eye lid, Draw an eyebrow for the right eye.
5. Draw an upside down rainbow for the iris' of each eye.
6. Fill-in the inside of the face of the portrait with unusual lines & shapes. (don't settle for boring zigzags!) Build up layers of chalk to create depth of color.
7. Begin to color by using warm chalk pastels on one side of the face and cool colors on the opposite side of the face. Try to keep chalk colors PURE. (gently blow chalk dust from paper )
8. Combine colors from the same palette on top of one another which will result in very deep, rich tones. (try not to mix cool with warm)
9. Experiment using oil pastels OVER chalk. (not the reverse)
10. When finished, spray entire surface using fixative. Allow to dry before framing.



CHESTER COUNTY ART ASSOCIATION

610-696-5600

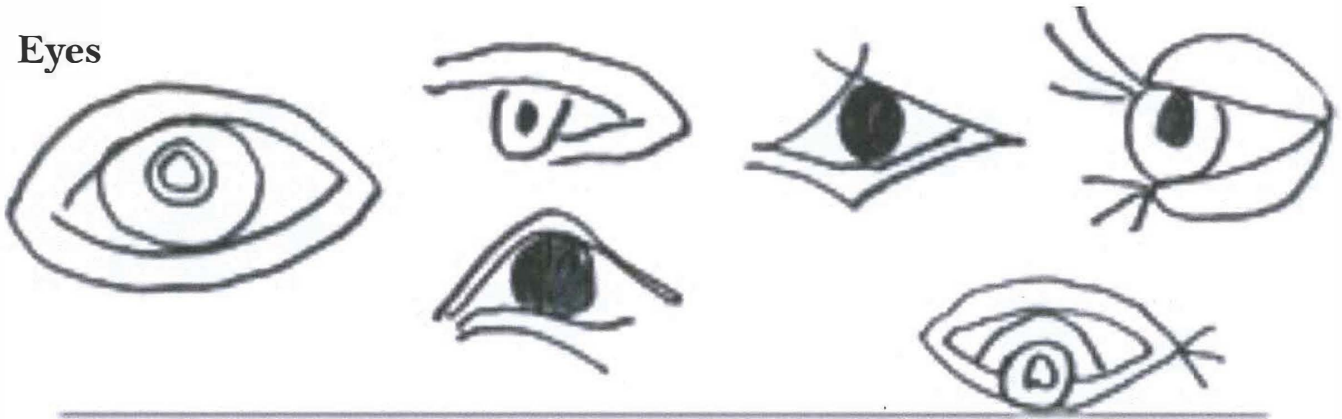
[www.chestercountyarts.org](http://www.chestercountyarts.org)

Lesson Plan by instructor Deb Hodies: Consider the following summer camps!

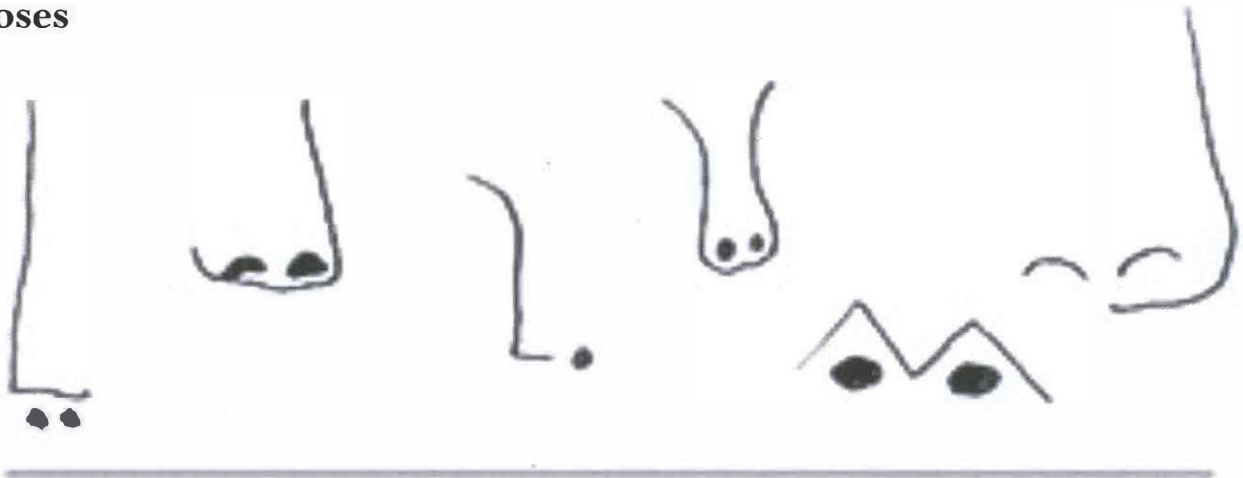
- Inspired Artists (grades 1-3), June 22 - June 26, 12:45 to 4PM
- Drawing & Painting for the Young Artist (grades 3-5), Aug. 3 - Aug. 7, 12:45 to 4PM

# Picassoesque Facial Features

## Eyes



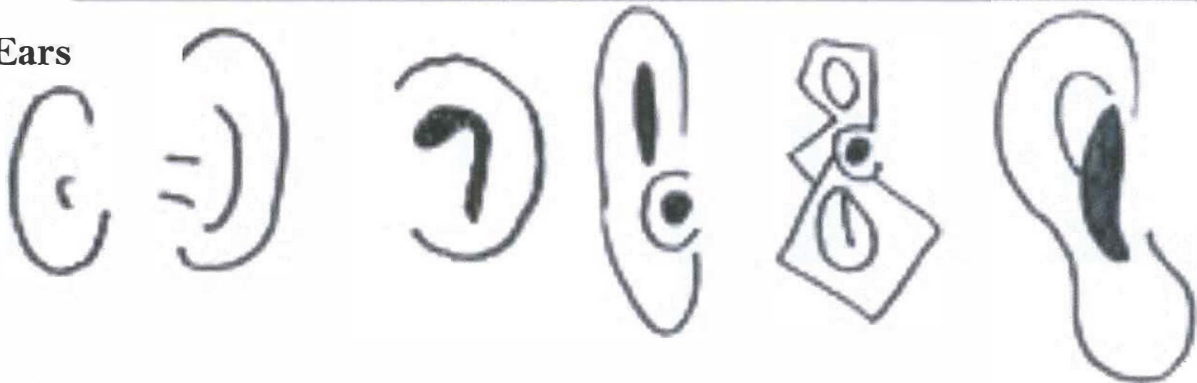
## Noses



## Mouths



## Ears





## **Pablo Picasso**

Pablo Picasso was born on October 25th, 1881 in Malanga, Spain. Picasso was a Spanish painter, sculptor, printmaker, ceramicist and theatre designer who spent most of his adult life in France. Regarded as one of the most influential artists of the 20th century, he is known for co-founding the Cubist movement, the invention of constructed sculpture, the co-invention of collage, and for the wide variety of styles that he helped develop and explore. Picasso's work is often categorized into periods. While the names of many of his later periods are debated, the most commonly accepted periods in his work are the Blue Period (1901–1904), the Rose Period (1904–1906), the African-influenced Period (1907–1909), Analytic Cubism (1909–1912), and Synthetic Cubism (1912–1919), also referred to as the Crystal period. Exceptionally prolific throughout the course of his long life, Picasso became one of the best-known figures in 20th-century art. He passed away on April 8th, 1973 at the age of 91.